



The VISITOR

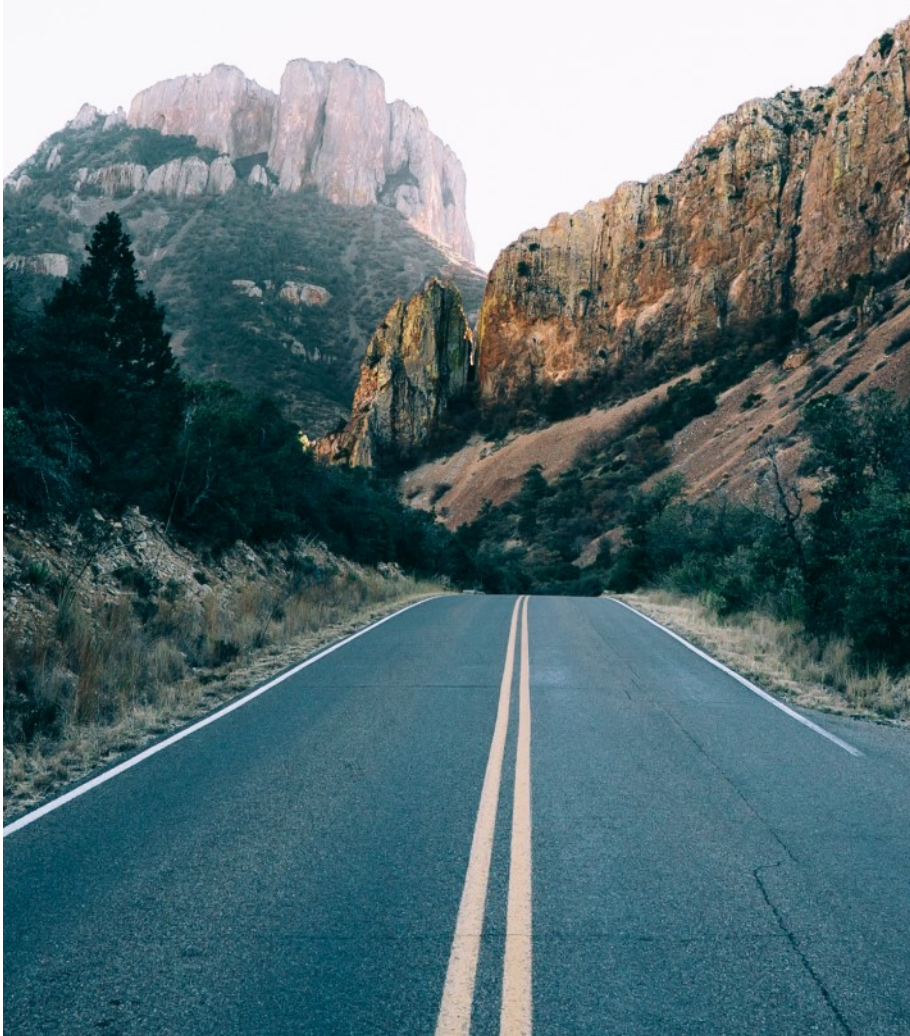
A monthly publication of St. Luke's Methodist Church - Kilgore, Texas

January 2025

Issue 1

NEW YEAR, *New You!*

Where is God leading you in 2025?



INSIDE THIS ISSUE

Board of Stewards | pg. 3

Contact us | pg. 1

End of Year Giving | pg. 4

Holy Huddlers | pg. 3

January Anniversaries | pg. 5

January Birthdays | pg. 5

January Calendar | pg.6

Jingle Jam | pg. 1

Joys & Concern's | pg. 5

New Church Directory | pg. 2

Parents Night Out | pg. 2

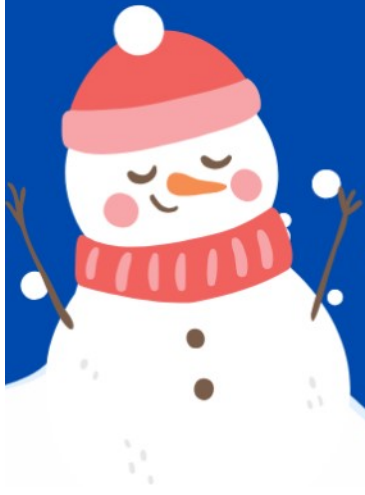
Soup & Pie Luncheon | back

Ways to give at St. Luke's | pg.4

Wednesday Night Activities | pg. 3.

JINGLE JAM

Friday, January 31
6:00pm
St. Luke's Family Center



After the hustle and bustle of the Christmas season, join us for a night of fun and fellowship as we gear up for a great new year.

Jingle Jam will be a night of fun games, prizes, music, activities, and food. Think Fall Festival, but with snow instead of hay.

Everyone is invited to join us and to volunteer.

Just because it's fun, doesn't mean it's just for kids. Fun is for everyone!

There will be something for people of all ages. Invite a friend and join the fun!

A NOTE *from the office*

The coming year is going to mean a lot of change and growth for our church family. We can't wait to see all the amazing things 2025 will hold for us. You are a vital part of the success of every program, event, and activity that we host at St. Luke's. We invite you to fully connect with us and participate in all that we have to offer. Join a Bible Study, attend an event, volunteer for a program. Let the Holy Spirit lead you to a deeper understanding of what it means to seek God and His call on your life.

We hope that 2025 is the year that you get fully involved in the life of the church. That might mean helping or participating in something new and completely out of your comfort zone. We will be right there with you to help guide and support you as you find your fit at St. Luke's.

YOU are what makes our church family complete. Invite a friend help us see what we can accomplish together.

STAFF CONTACT INFORMATION

Church Office

office@stlukeskilgore.org
(903) 984-3576

Rev. Glen Blackmon

Interim Sr. Pastor
pastor@stlukeskilgore.org
(903) 521-3810

Lindsey Exline

Dir. of Nursery Care
children@stlukeskilgore.org
(903) 985-1341

Jennifer Powell

Dir. of Communications
office@stlukeskilgore.org
(903) 984-3576

Richelle Rathbun

Hospitality Coordinator
(903) 371-3499

James Vermillion

Music Dir.
music@stlukeskilgore.org
(903) 241-1447



PARENTS NIGHT OUT

Friday, January 3 | 6:00pm-9:00pm

\$15 per child | Registration is required

Calling all parents! Are you ready for a break from your kids? We totally get it, Christmas Break is long and everyone is hopped up on Christmas Cookies. Let us help you out.

The first Parents Night Out of 2025 will be, Friday, January 3, 6:00pm-9:00pm. Mrs. Lindsey and her nursery workers have a great night of fun games, pizza for dinner, a snack, and watching the movie frozen.

If your child would like to participate, please use the link below to register them and pre-pay. The deadline to register is Thursday, January 2 at 5:00pm. We must have at least 5 participants to hold this event.

<https://stlukeskilgore.sharefaithconnect.com/external/form/6e99456c-e3a6-4a8e-ab38-cfaf92fc59e1>

NEW CHURCH DIRECTORY

It's time for a new Church Directory!

We will be taking photos of as many members as we can in January and creating our own directory that each family can purchase for \$5. Here's the info you need to know.

Photos

We will have a backdrop and camera set up in the Family Center and in the Bride's room each Sunday in January to capture your families photo. If you are not available on Sunday mornings, please contact the church office to set up a time that you can come and to have your photo made.

Update your Information

Please use the link below to give us you updated contact information. A paper form will also be available in worship and in the church office.

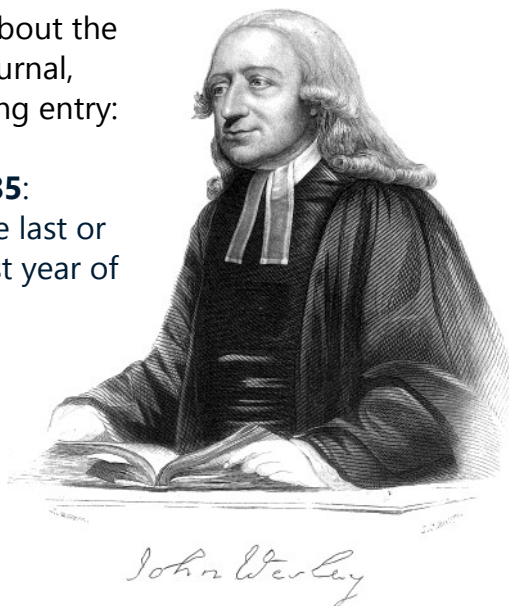
If you have any questions or need any assistance please contact the church office.

<https://stlukeskilgore.sharefaithconnect.com/external/form/74631828-5471-4149-bcaf-443a967be702>

John Wesley wrote about the new year in his journal, including the following entry:

January 1, 1785:

"Whether this be the last or no, may it be the best year of my life!



2025 BOARD MEMBERS

Board Chair

Amanda Gillen-Hall

Staff Parish Relations

Carol Grimes

Endowments

Celia Mooney

Lay Leader

Anna Rohde

Trustees

Bill Bryant

Class of 2024

Bill Bryant
Milton Hattaway
Paula Hooks
Jim McCann
Cody Sprayberry

Class of 2025

Kathy Brown
Alan Clark
Carol Grimes
Dean Miller

Class of 2026

Danny Harrison
Janet Craver
Joe Wallace
Annette Morgan

The current board members will stay in place for a few extra months to help with the process of finding a new senior pastor.

HOLY Huddlers

We would like to invite and welcome everyone to eat and fellowship with the Holy Huddlers. We meet twice a month (not always the same week of the month due to holidays). Supper will be on you, but the fellowship will be shared by all.

All gatherings begin at 6:00pm

January 3

Bodacious BBQ, Kilgore

January 17

Tia Juanita's, Longview

If you have any questions, please call
Barbara Francisco, 903-918-6797

WEDNESDAY NIGHT MEALS

January 8

Beef Spaghetti, Salad, Dessert, & a Drink

January 15

Baked Chicken, Mac & Cheese, Green Beans, Dessert, & a Drink

January 22

Baked Potatoes, Salad, Dessert, & Drink

January 29

Teriyaki Chicken, Rice, Stir Fry Veggies, Dessert, & Drink

\$3 for kids under 12
\$6 adults over 12

Cash, Check, and Credit Cards
will be accepted at dinner.

End of Year GIVING

What you need to know

1

CONTRIBUTION STATEMENTS

Current Contribution statements will be mailed to every member. Once you receive your statement please look over it and let us know if we need to make any adjustments. We moved to a new Membership Database last year and it may have caused some missing or mislabeled contributions. Please contact the church office so that we can get those fixed for you.

2

ONLINE STATEMENTS

With our new membership database you have the ability to view your Contribution Statements online. If you would like to receive log-in information so that you can view your statement, please contact Jennifer Powell in the church office.

3

END-OF-YEAR DEADLINE

The deadline for the church to receive your 2024 contributions is December 31. Contributions received after this date will not be included in your 2024 Contribution Statement. The office will be closed December 26-January 1. Contributions can be dropped off in the mail slot in the office door when the office is closed.

4

ONLINE GIVING

Visit our website stlukeskilgore.org to set-up a recurring contribution from a bank account, credit/debit card, or online bill pay. Contact the church office for more information or to set-up automatic giving.

If you have any questions or need assistance please contact the church office at office@stlukeskilgore.org or **903-984-3576**.

WAYS TO GIVE St. ^{AT} Luke's



IN PERSON

Drop your gift in one of the offering boxes at worship or in the offering plate.



ONLINE

at

stlukeskilgore.org



TEXT

"give" to



BY MAIL

St. Luke's MC
401 E. Main St

JANUARY BIRTHDAYS

Please say a prayer for our church family on their special day.

If we missed your date, please call the church office (903-984-3576).

January 2

Ed Aguilar
Danny Harrison

January 3

Shelia Cross

January 7

Jennifer Powell

January 8

Bob Lindley

January 9

Kay McKinley

January 10

Vivienne Skinner

January 11

Michael McClammy

January 12

E.J. Chowdhury

January 13

Maureen Witt

January 14

Lorelai Aguilar

January 15

Patrick Akers
Sam Holley

January 16

Tracey Varvel

January 17

Leslie Bennett

January 19

Amanda Gillen-Hall
Debra Maloch

January 21

Trey Rathbun

January 25

James Mooney

January 26

Ginny Anderson
Paul Johnston

January 27

William Ridder

January 29

Christopher Beck
Brian Holcombe
Celia Mooney

January 30

Mikki Ellis

JOYS & CONCERNS

Please use the "Prayer" cards in the pews to keep us updated on your loved ones.

PRAYERS FOR OUR MEMBERS

Roberta Boggs
Tommy Freeman
Pat Haynes

Bob Cantu
Jo Hancock
Sam Holley

Jack & Sharry Christopher
Milton Hattaway
Carolyn Holcombe

PRAYERS FOR OUR FAMILY & FRIENDS

Robert Adams.....friend to many
Melody Bagwell.....wife of Mark Bagwell
Sherrri Bennett & Family.....friend of Karen L. Wilson
Linda Brooks.....mother of Donna Barnard
Bobbie Bryant.....friend of Dan & Shelia Cross
Brad Campbell.....cousin of Randy Holder
Lindsey McClain Castro.....former member and friend to many
Lizz Collins.....wife of Mike Kerr
Chris Cross.....brother of Dan Cross
Sandra Dinger.....family member of Laura Farnham
Nick Hanewald.....neighbor of Jim & Sharon McCann
Richard Hansen.....brother-in-law of Jack & Ronda Dickey
Zach Hartfiel.....friend of Jamie Haynes & Robert Poland
Don Hedrick.....friend of Karen L. Wilson
Judy Issacs.....friend of Karen Wilson
Maurine Masterson.....aunt of Tonia Belk
Sandra Melville.....sister of Milton Hattaway
Mary Patton.....neighbor of Dan & Shelia Cross
Emily Porter and her infant twins, Emberly & Emberlynn Mesker
.....friend of Lindsey Exline
Sherrri Pilcher & Family.....
French Sturrock.....friend of Jamie Haynes & Robert Poland
Terri Smith.....friend of Jan Hattaway
Buddy & Selena Simmerman.....friends of Rhonda & Jack Dickey
Blakely Tarbutton.....family of Bob & Hope Cantu
Heather Thompson & daughter.....friend of Tracey Varvel
Les Thurston.....grandson of Bob & Cindy Lindley
Amanda Urban.....friend of Becky & Joe Wallace
Amber Watson.....friend of Glenda Cochran
Harold Wiese.....father of Emily Mason
Sharri Wix.....in-law of T. J & Amanda Gillen-Hall
Julie Brogoitti Woods & Randy Brogoitti...friends of Bill & Carolina Bryant

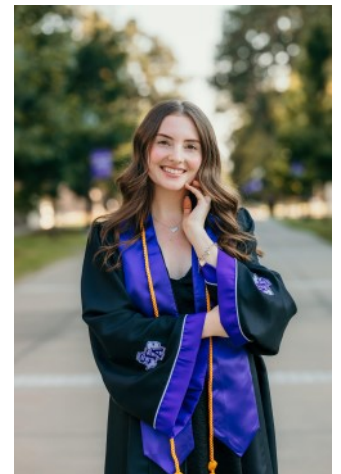
JANUARY ANNIVERSARIES

Name	Date
Dan & Janel Brown	1/5/1963
Michael & Donna Barnard	1/7/2005
Robert & Sherry Ellis	1/7/1980
Paul & Laura Johnston	1/11/2014
E. J. & Niki Chowdhury	1/17/1998
Dean & Kathe Miller	1/30/1965
David & Annette Morgan	1/31/1981

JOYS

One of our St. Luke's Scholarship Recipients, **Payton Berger**, graduated from Stephen F. Austin University in December. Payton was awarded a Bachelor of Science in Interdisciplinary Studies EC-6. She is the daughter of Tara & Brian Hobercht and is a 4 year recipient of the St. Luke's Scholarship.

She extends her appreciation for the incredible gift the scholarship funds were in her journey to a degree.



January 2025

* Nursery provided for this event.
 ** Nursery can be arranged for this event.
 Call the church office, 903-984-3576

			1	2	3 Parents Night Out 6:00pm-9:00pm Holy Huddlers 6:00pm	4
5	6	7 Methodist Women 6:00pm	8 Wednesday Activities Resume	9	10	11
12	13	14	15	16	17 Holy Huddlers 6:00pm	18
19	20 Board of Stewards Meeting 6:00pm	21	22	23	24 Soup & Pie Lunch 11:00am-1:30pm	25
26	27	28	29	30	31 Jingle Jam 6:00pm	

RECURRING WEEKLY:

Sunday

- 8:30am | Arise Worship* (Sanctuary)
- 9:30am | Sunday School*
- 10:30am | Traditional Worship * (Sanctuary)
- 11:30am | Handbell Choir (Handbell Room)

Monday

- 9:00am-2:30pm | Mother's Day Out

Tuesday

- 8:00am | Prayer Group** (Knowles Chapel)
- 11:45am | Tuesday Lunch Bunch (Family Center)

Wednesday

- 9:00am-2:30pm | Mother's Day Out
- 3:15pm-5:30pm | Children's Choir & Youth
- 5:15pm-6:00pm | Wednesday Dinner (Family Center)
- 6:00pm | Chancel Choir Rehearsal* (Sanctuary)
- Wednesday Bible Study (see list)

Thursday

- 6:30pm | Arise Band Rehearsal* (Sanctuary)

The
VISITOR

"The Visitor" Published Monthly by:
St. Luke's Methodist Church
401 E. Main St., Kilgore, TX 75662-5905

Non-Profit Organization
U.S. POSTAGE PAID
Kilgore, Texas
Permit No. 202

ADDRESS SERVICE REQUESTED

LOVE GOD

LIVE HIS WORD

SHARE HIS GRACE



ST. LUKE'S METHODIST CHURCH
401 E. Main St., Kilgore, TX

SOUP & PIE LUNCHEON

& Country Store

Friday, January 24, 2025
Serving 11:00am-1:30pm
Dine-in or Take-Out

Tickets
\$10 each
\$4 for kids under 12