



# *The* **VISITOR**

A monthly publication of St. Luke's Methodist Church - Kilgore, Texas

May 2025

Issue 5



**THE**

**FLAMINGOS**

**ARE COMING!**

## **INSIDE THIS ISSUE**

### **The Flamingos Are Coming!**

Page 1

### **Meet the New Pastor**

Page 2

### **St. Luke's Kids**

Pages 3 & 4

### **St. Luke's Youth**

Pages 5 & 6

### **Easter at St. Luke's**

Page 7 & 8

### **If you missed it**

Page 9 & 10

### **See What's Coming Up**

Pages 11

### **Financial Update**

Page 12

### **Birthdays, Anniversaries, & Prayers**

Page 13

### **Calendar**

Page 14

### **Garage Sale**

Backpage

# THE FLAMINGOS ARE COMING!

Be on the lookout for a flock  
of missing flamingos.

In May, St. Luke's Kid's & Youth will  
be wrangling flamingos in an effort to  
raise funds for church camp & summer  
missions trips.

Protect yourself now by purchasing  
"Flamingo Insurance" for \$25.

Use the QR Code or contact the church  
office to purchase yours TODAY!



## STAFF CONTACT INFORMATION

### Church Office

office@stlukeskilgore.org  
(903) 984-3576

### Rev. Kelly Inman

Sr. Pastor  
pastor@stlukeskilgore.org  
(432) 296-9540

### Lindsey Exline

Dir. of Nursery Care  
children@stlukeskilgore.org  
(903) 985-1341

### Courtney Loper

Business Manager  
finance@stlukeskilgore.org

### Jennifer Powell

Dir. of Communications  
office@stlukeskilgore.org  
(903) 984-3576

### Richelle Rathbun

Hospitality Coordinator  
(903) 371-3499

### James Vermillion

Music Dir.  
music@stlukeskilgore.org  
(903) 241-1447

## 2025 BOARD MEMBERS

### Board Chair

Amanda Gillen-Hall

### Staff Parish Relations

Carol Grimes

### Endowments

Celia Mooney

### Lay Leader

Anna Rohde

### Trustees

Bill Bryant

### Class of 2024

Bill Bryant  
Paula Hooks  
Jim McCann  
Cody Sprayberry

### Class of 2025

Kathy Brown  
Alan Clark  
Carol Grimes  
Dean Miller

### Class of 2026

Danny Harrison  
Janet Craver  
Joe Wallace  
Annette Morgan

The current board members will  
stay in place for a few extra  
months to help with the  
process of finding a new  
senior pastor.

# Meet OUR NEW PASTOR

**Rev. Kelly Inman**



My name is Kelly Inman, and I'm originally from West Texas, born in Big Spring in 1972. I grew up in Stanton, Texas, where I graduated from high school in 1990. My brother and I were adopted by our maternal grandparents, Ralph and Erma Inman, at a young age. My grandfather, a Baptist pastor, served at Valley View Baptist Church, just south of Midland, Texas. At 9, I gave my life to Christ at Valley View and was baptized by my Grandad at Cotton Flat Baptist Church. When I was a freshman in high school, my Grandad passed away in our home—a devastating moment for my brother and me, especially when we needed him most. During that time, our coaches and teachers stepped in as mentors and father figures, while my Grandma held our family together, providing a powerful example of faith.

After high school, I attended Texas Tech University in Lubbock for a year. My lack of motivation and low class attendance stemmed from my uncertainty about my future. While I had felt God's call to ministry for years, I was angry and avoided it. Toward the end of my time at Texas Tech, I started attending the Wesley Foundation, where I saw a listing for a camp counselor position at Highland Park United Methodist Church in Dallas. That decision became one of the most important choices of my life. Lake Sharon became the place where God spoke His love and healing into my wandering heart. It was there I met my future brother-in-law, who introduced me to Keri, the love of my life. That experience also led me to my calling in ministry and education. I served as a camp counselor for three summers at HPUMC, and it was through that time that God began to restore me.

Keri and I married three years later. We've now been married for 29 1/2 years and have two wonderful children: Kyle (28), who lives near Atlanta, Georgia, and is now married to our new daughter-in-law, Lucy, and Kayli (25), who lives with us currently and is in her second year as the Freshman Biology teacher at Alba-Golden ISD. Over the years, we've lived, taught, coached, and preached in various areas of Texas...wherever God has led.

I spent 15 years as a full-time pastor in the United Methodist Church within the Northwest Texas Annual Conference, with significant guidance from my father-in-law, Rev. Lyndall Fletcher, who was an elder in the conference. It was through a Bible study on discerning God's call into ministry at St. Stephen's UMC in Amarillo that I felt called to become

a pastor. Later that night, my father-in-law spoke to me about the need for pastors in small, rural churches. I responded to God's call and accepted my first appointment at First United Methodist Church in Hart, Texas.

After my first appointment, I completed my Bachelor's degree and began my career in teaching and coaching. It was Keri who encouraged me to see teaching as a form of ministry, particularly emphasizing the need for strong, Christian men in the schools. For 14 years now, I've taught and coached in various schools across the great state of Texas. In 2018, I would return to school to earn my Master of Arts Degree in Educational Leadership from UTPB which paved the way for me to serve as an Assistant Principal in Mount Pleasant, Texas. I truly feel called both to the church and the public school system. These dual callings have led me to become a bi-vocational pastor, and for the past two years, I have had the privilege of serving as the pastor of Reeves Chapel GMC near Pittsburg, Texas, and as an Assistant Principal in Mount Pleasant.

Keri and I are excited to be continuing to follow God's call at St. Luke's Methodist Church. We can't wait to see where he leads this church family.

We will be moving into the parsonage at the end of May and look forward to becoming part of this amazing community.

*Rev. Kelly Inman*  
pastor@stlukeskilgore.org  
(432) 296-9540





## MARK YOUR *Calendar*

Upcoming Children's  
Ministry Events

## M A Y

**2** Parents Night Out  
6:00pm-9:00pm

**4** Children's Choir  
Spring Musical  
6:00pm

**7** Last Wednesday Night  
Dinner & Studies  
Dinner 5:15pm  
Studies/Party 6:00pm

**10** Mother/Son Flag Football  
10:00am

**14** Children's Choir  
End-of-Year Party  
3:15pm-5:00pm

## S U M M E R

Vacation Bible School  
June 23-27

Summer Slam  
July 15-18

Please see the calendar on page 14  
for a complete list of this month's  
events and meetings.

### PARENTS NIGHT OUT

May 2 | 6:00pm-9:00pm

\$15 per child

Children's Courtyard

Hey Parents, are you ready for a break? Sign up your kids for the May Parents Night Out. This monthly event provides a night of games, crafts, pizza, and a movie, for your kids at the low cost of \$15 per child. Registration closes at 5:00pm on Thursday May 1. Use the QR code to register your child today!



### TELL ME THE TRUTH!

Sunday, May 4 | 6:00pm

Gym

It's the 1970s, and time for the grooviest game show on television, "Tell Me the Truth". Host Jane Cheese, and intrepid announcer Johnny Glibb guide our 3 contestants Skip (a catch and release mosquito wrangler), Mildred (an amateur surgeon) and Adrian (a freelance astronaut) through what should be a simple array of Bible questions. The answers are surprising, and seemingly wrong, until the judges, and all of us, take a fresh look and discover the real meaning and message — Jesus!

ST. LUKE'S  
METHODIST CHURCH

# FLAG FOOTBALL MOM V. SON

FOR MOMS & SONS - ALL AGES WELCOME

SATURDAY | ST. LUKE'S  
MAY 10 | SIDE YARD  
START AT 10AM

JOIN FOR THE FUN!

REGISTER NOW!

\$30 / TEAM  
6 MOMS / SONS

More Information  
903-984-3576  
office@stlukeskilgore.org

# CHURCH CAMP

## Change of plans

Due to a scheduling conflict we will be changing the dates that we are attending Church Camp. The new date is June 16-20. Attending this week allows more children and volunteers to attend camp.

If you have already registered for Rise-Up Camp, June 30-July 4, and will be unable to switch dates, please let us know in the office. We will find volunteers to attend along with our campers, if we have any that want to attend this session.

We are sorry for any inconvenience. If you have any questions or need assistance please contact Lindsey Exline or Jennifer Powell



### The new camp information is:

Thrive Camp

**Session 1:** June 16-20

**Registration fee:** \$395

There should be a small deposit due at the time of registration. The church will make the final payment. Any additional funds from you will be made to St. Luke's prior to June 16.

**Participants:** students 1st-12th grades

Deadline to register is May 15

Link to register: <https://www.shelbygiving.com/App/Form/60b0ef73-98e5-464a-90de-7318cb1fcd5a>

# END-OF-THE YEAR PARTIES

## May 7 | 6:00pm-7:00pm

The Children's Ministry Wednesday Night bible Study Group will be celebrating the end of the school year with a night of celebration. Students that have participated in the this year's study will be presenting their craft folders and sharing what they have learned this year.

\*this is the last Wednesday night Dinner & Study of the school year.

## May 14 | 3:15pm-5:00pm

The Children's Choir will be celebrating the end of the school year with a party and games after school. The vans will pick up students as usual and the kids will return to the church gym for activities. Pick up will be at 5:00pm in the gym.

# SUMMER SLAM

July 15-18

**Completed 3rd-12th Grades**

Summer Slam is a great opportunity to do good in the world.

Students who have completed 3rd-12th Grade are invited to join us for a Mission Retreat where they will complete several mission projects in our community. The kids will stay over night at the church and participate in worship and activities led by Lindsey Exline. There is a \$40 registration fee.

Use the QR Code to register your student NOW!



**Cokesbury Kids**  
**ROAD TRIP**  
**ON THE GO WITH GOD**

**VACATION BIBLE SCHOOL**  
**June 23-27**  
**9:00am-12:00pm**  
**Ages 4 years-5th Grade**

Register at [stlukeskilgore.org](http://stlukeskilgore.org)  
or by using the QR code

**4**



## MARK YOUR *Calendar* Upcoming Youth Ministry Events

# M A Y

### 7 Last Wednesday Night Dinner & Studies

Dinner 5:15pm  
Studies 6:00pm

### 14 End-of-the Year Party

Afterschool-5:30pm

### 15 Deadline to register for Church Camp

### 18 Senior Sunday

Breakfast 9:30am

Please see the calendar on page 14  
for a complete list of this month's  
events and meetings.

## YOUTH ON SUNDAY AFTERNOON

### Sundays, 4:00pm-6:00pm

Every Sunday we host a youth gathering with a snack supper, games, and other activities in the Activity Center/Gym.

If your family is interested in providing supper, please contact Jennifer Powell in the church office. (903) 984-3576 or [office@stlukeskilgore.org](mailto:office@stlukeskilgore.org)

### May Schedule

May 4	Group Games
May 11	No Activities (Mother's Day)
May 18	Mission Project
May 25	Pool Party

## LAST WEDNESDAY NIGHT DINNER & STUDIES OF THE SCHOOL YEAR

### Wednesday, May 7

#### Dinner, 5:15pm | Messy Games 6:00pm-7:00pm

Wednesday Night Activities are a big part of our Youth Ministry Program. We are sad to see the school year end, but we can't wait for all the great summer plans.

To celebrate the last Wednesday Night Study of the school year we will be have a night of messy fun. Make sure to bring a change of clothes and be ready to go home pretty gross. Parents, you might want to bring a towel to protect your car at the end of the night.

## END-OF-THE-YEAR PARTY

### Wednesday, May 14 | After school-5:30pm

It's time for our annual end-of-the-year party. We will be picking the students up as usual. The vans will take the students to a mystery location for an end-of the year party. Parents we will let you know our location before we head out.

## BIG HOUSE MISSION CAMP

### Cancelled

We are canceling Big House do to a scheduling conflict. Jr. High & Sr. High students are invited to participate in Summer Slam instead.

# SUMMER SLAM

### July 15-18

### Completed 3rd-12th Grades

Summer Slam is a great opportunity to do good in the world.

Students who have completed 3rd-12th Grade are invited to join us for a Mission Retreat where they will complete several mission projects in our community. The kids will stay over night at the church and participate in worship and activities led by Lindsey Exline. There is a \$40 registration fee.

Use the QR Code to register  
your student NOW!



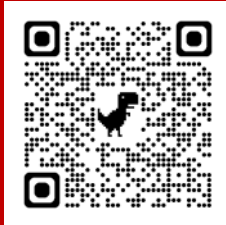
# CHURCH CAMP

## Change of plans

Due to a scheduling conflict we will be changing the dates that we are attending Church Camp. The new date is June 16-20. Attending this week allows more children and volunteers to attend camp.

If you have already registered for Rise-Up Camp, June 30-July 4, and will be unable to switch dates, please let us know in the office. We will find volunteers to attend along with our campers, if we have any that want to attend this session.

We are sorry for any inconvenience. If you have any questions or need assistance please contact Lindsey Exline or Jennifer Powell



### The new camp information is:

Thrive Camp

**Session 1:** June 16-20

**Registration fee:** \$395

There should be a small deposit due at the time of registration. The church will make the final payment. Any additional funds from you will be made to St. Luke's prior to June 16.

**Participants:** students 1st-12th grades

Deadline to register is May 15

Link to register: <https://www.shelbygiving.com/App/Form/60b0ef73-98e5-464a-90de-7318cb1fcd5a>

# Senior SUNDAY

## Celebrating the class of 2025!

The following students will be recognized at our Senior Sunday Celebration on May 18:

**Alex Mathis**  
**Jacob Mooney**  
**Mark Varvel**  
**Maurine Witt**

Join us for a light breakfast and reception at 9:30am in the Family Center, where you can spend time getting to know and congratulating our graduates. Following breakfast, the students will be honored during the 10:30am worship service.

If your graduating student is not listed here and you would like them to be recognized, please contact Jennifer Powell in the church office.

# VACATION BIBLE SCHOOL

**June 23-27**

**9:00am-12:00pm**

**Lunch, 12:30pm-2:00pm**

Calling all youth! Make plans to volunteer to help lead a group or help in a rotation at this year's Vacation Bible School.

Lunch will be provided for all youth volunteers everyday. Stick around after VBS for open gym & food.

# Thank You!

**Thank you to everyone that helped make our lock-in a success.:**

Meggan Clark, Kathy Brown, Lindsey Exline, Amy Hill for spending your time as chaperones.

Richelle Rathbun & Barbara Francisco for serving dinner.

The Seeker Class for providing breakfast & dinner.

Ginny Anderson, Dennis Ellis, Barbara, Francisco, and Karen Wilson for picking up students from the high school and the middle school.

All the parents that sent snacks.

6



# Palm SUNDAY

Palm Sunday kicked off Holy Week with a special performance from the Children's Choir.



The rain moved the Community Worship Service inside the gym, but we were blessed with 60 people in worshipping with us.

Thank you the Jack & Susan Moore and the Kilgore Whataburger for providing breakfast.



Josie Johnston and Luke Cha did a great job as acolytes on Easter Sunday.





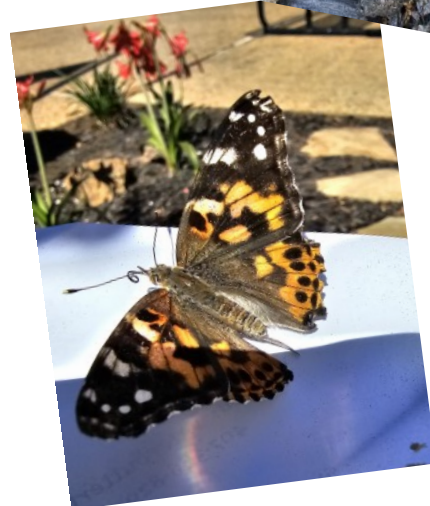
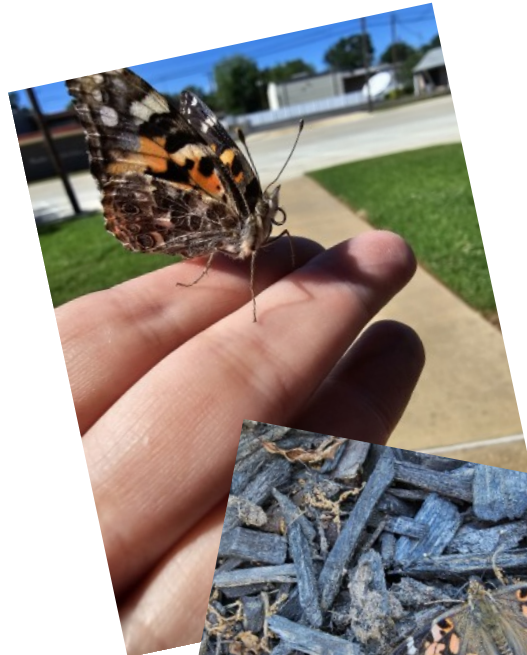
Make sure to check out the faux stained glass, made by our youth. They will be up through the Easter season.



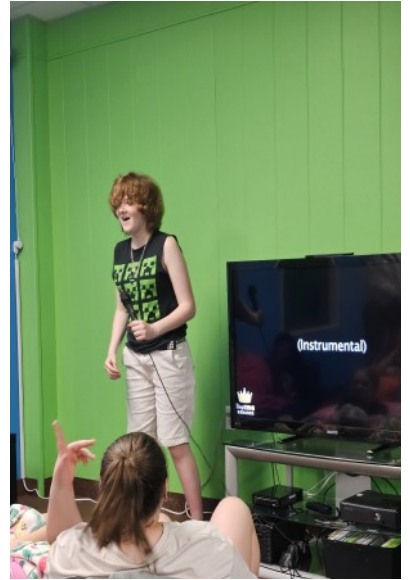
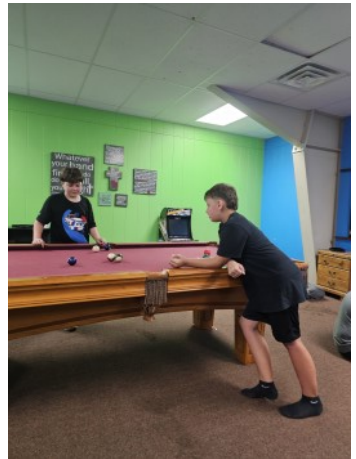
Our congregation worked together to create the most beautiful butterflies flying through the Children's Courtyard on Easter Sunday!

# Butterfly RELEASE

As many of you know, our live butterflies did not make it in time for our butterfly release on Easter Sunday. The package arrived on Monday, and we were fully expecting a box full of lifeless butterflies. To our amazement, and in true Easter fashion, the sound of wings rubbing against paper could be heard from the box. We quickly opened all the paper packets and released 150 butterflies in the Family Center Garden. There are plans to try a live butterfly release for those who purchased butterflies at a later date. Big thank you to Janet Craver for helping me open all the packets.











We hosted 15 students at a lock-in on April 25.

**If you've every wondered what it takes to keep  
15 teenagers occupied for 18 hours, let me share:**

- 3 rounds of blacklight dodgeball
- 6 rounds of sardines (the game, not the slimy little fish)
- Dinner
- 6 12-packs of soda
- Gaga ball
- Volleyball
- Hide and seek
- An unimaginable number of relay games
- 1 parachute
- 8 inflatable rings
- 12 rounds of blind karaoke
- 3:00am pizza making
- 1 round of regular dodge ball
- 80 balloons
- Card games
- Craft supplies
- A ton of snacks
- 3 scooters
- Being asked "What's next?" at least 50 times
- At least 20,000 steps

We didn't all make it to the end.  
At least one fell asleep on the floor with only a pillow.

But being asked "when can we do this again?",  
made it all worth it



# HOLY *Huddlers*

We would like to invite and welcome everyone to eat and fellowship with the Holy Huddlers. We meet twice a month (not always the same week of the month due to holidays). Supper will be on you, but the fellowship will be shared by all.

**All gatherings begin at 6:00pm**

**May 2**

The Back Porch, Kilgore

**May 16**

IHOP, Longview

If you have any questions, please call  
Barbara Francisco, 903-918-6797

# METHODIST *Women*

**Tuesday, May 6  
6:00pm**

The first Tuesday of each month the Methodist Women's group gathers for fellowship and devotion. If you are a woman looking for a place to learn and grow, we have just the place for you.

We hope to see you at our next meeting.

# WEDNESDAY NIGHT MEALS

**May 7**

Shredded Chicken Tacos, White Queso,  
Elote Corn, Dessert, & a Drink

This will be the last Wednesday Night  
Dinner & Study for the school year.  
We will resume in September.

\$3 for kids under 12  
\$6 adults over 12

Cash, Check, and Credit Cards  
will be accepted at dinner.

*Welcome*  
TO OUR NEWEST MEMBER

**Dianne Lee** joined  
our church family on  
Sunday, April 27.



# Kilgore CHURCH WOMEN

St. Luke's Methodist Women hosted the Kilgore Church women's Quarterly Meeting on Friday, April 25. The Luncheon included a presentation by Mrs. K Castles.



# Quarterly

## FINANCIAL REPORT

CONGREGATIONAL GIVING	MARCH	FEBRUARY	JANUARY
Loose Plate Offering	\$427.49	\$173.00	\$202
Tithed Offering	\$30,421.95	\$57,699.58	\$83,554.03
Sunday School Offering	\$296.20	\$177.00	\$251.00
<b>TOTALS</b>	<b>\$31,145.64</b>	<b>\$58,049.58</b>	<b>\$84,007.03</b>

<b>DESIGNATED FUNDS GIVING</b>	\$11,737.86	\$18,803.32	\$4,211.45
--------------------------------	-------------	-------------	------------

<b>ENDOWMENT WITHDRAWALS</b>	\$5,000	\$6,300	\$10,200
------------------------------	---------	---------	----------

SAMPLE OF EXPENSES	MARCH	FEBRUARY	JANUARY
Church Utilities	\$6,592.74	\$8,470.71	\$3,092.74
Office Expenses	\$2,831.40	\$2,583.49	\$1,378.75
Maintenance and Supplies	\$2,873.52	\$6,411.52	\$3,171.03
Church Building Insurance	\$5,609.29	\$5,609.29	\$22,856.64
Operating Expenses	\$5,551.35	\$21,927.98	\$75.39

## Did you know?

Using an "Offering Envelope" to give your donation to St. Luke's helps us manage your contribution statements? The Business Office keeps the envelopes on file to help us track your donations so that we can add them to your Contribution Statements at the end of each year.

*"Each of you should give what you have decided in your heart to give, not reluctantly or out of compulsion, for God loves a cheerful giver."*

**2 Corinthians 9:7**

## WAYS TO GIVE

### St. Luke's



### IN PERSON

Drop your gift in one of the boxes at worship or in the offering plate.



### ONLINE

At  
[stlukeskilgore.org](http://stlukeskilgore.org)



### BY MAIL

St. Luke's MC  
401 E. Main  
Kilgore, TX 75662



### QR CODE

## MAY BIRTHDAYS

Please say a prayer for our church family on their special day.

**If we missed your date, please call the church office (903-984-3576).**

### May 3

Jeannie Allison  
Brooklyn Patton

### May 4

Addilyn DeKoker  
Jacob Mooney

### May 7

Leon Courtney  
Bryce Linkinhoker

### May 8

Bill Bryant  
Dennis Ellis  
Robert Smith

### May 9

Veronica Sprayberry

### May 10

Alma Casey  
Cade Clark  
Cora Mooney

### May 12

Hadley Middlebrooks

### May 19

Cameron Stephens

### May 21

Jack Christopher

### May 22

Janet Craver

### May 23

Jetson Russ

### May 30

Janie Sweeney

### May 31

Jennifer Mooney

## JOYS & CONCERNS

Please use the "Prayer" cards in the pews to keep us updated on your loved ones.

### PRAYERS FOR OUR MEMBERS

Michael Barnard  
Jack & Sharry Christopher  
Tommy Freeman  
Carolyn Holcombe

Roberta Boggs  
**Glenda Cochran**  
Jo Hancock  
Randy Holder

Gregg Caraway  
Barbara Francisco  
Pat Haynes  
Sam Holley

**Mac Lee**

### PRAYERS FOR OUR FAMILY & FRIENDS

Melody Bagwell.....wife of Mark Bagwell  
Ricky Beets.....friend of Jack & Susan Moore  
Sherri Bennett & Family.....friend of Karen L. Wilson  
Linda Brooks.....mother of Donna Barnard  
Lindsey McClain Castro.....former member and friend to many  
Christina Cavazos.....daughter-in-law of Bob & Hope Cantu  
Lizz Collins.....wife of Mike Kerr  
Richard & Holly Davis.....Jim & Alana Williams  
Sandra Dinger.....family member of Laura Farnham  
Daniel Doktor.....friend of Jerry & Lindsey Exline  
**Baby Alexander Wayne Gabriel.....great-grandson of Pat Haynes**  
Cindy Garcia.....sister of Ronda Dickey  
Brandy Holman.....daughter of Tommy & Laura Farnham  
Keith Henderson.....friend of Beverly Gray  
**David Hughes.....friend of Rhett Rohde**  
Humberto & Norma Isassi.....sister & brother-in-law of Bob & Hope Cantu  
Diana Johnston.....sister of James Hanshaw  
John Paul Kulak.....friend of Bob & Hope Cantu  
Sandra Melville.....sister-in-law of Jan Hattaway  
Kay Montelbano.....co-worker of Lindsey Exline  
**Dale & Lawana Sistrunk.....friend of Chuck & Vernie Kunkel**  
Terri Smith.....friend of Jan Hattaway  
Kathy Spencer.....cousin of Sheryl Caraway & Susan Moore  
Kay-Lee Tarbutton.....family of Bob & Hope Cantu  
Bonnie Venable.....Sharon McCann  
Amber Watson.....friend of Glenda Cochran  
Jeff Wenstrand.....friend of Art & Pat Morchat

### WE EXTEND OUR SYMPATHY TO...

Bill Bryant on the passing of his sister, Sue West.

The family of Robert Adams. Robert passed away on April 27.

## MAY ANNIVERSARIES

Name	Date
Jim & Sharon McCann	5/4/1968
Dan & Shelia Cross	5/7/1979
Kraig & Tonya Dekoker	5/22/2004
Bill & Peggy Clarke	5/20/1978
Joe & Becky Wallace	5/20/1978



# May 2025

\* Nursery provided for this event.  
 \*\* Nursery can be arranged for this event.  
 Call the church office, 903-984-3576

				1	2 <b>Parents night Out</b> 6:00pm-9:00pm  <b>Holy Huddlers</b> 6:00pm	3
4 <b>Children's Choir spring Musical</b> 6:00pm	5	6 <b>Methodist Women</b> 6:00pm	7 <b>Last Wednesday Night Dinner &amp; Studies of the school year</b>	8	9	10
11 <b>Mother's Day</b>	12 <b>Begin Collecting Garage Sale Donations</b>	13	14 <b>Children's Choir &amp; Youth End-of-Year Parties</b>	15	16 <b>Church-Wide Garage Sale</b> 8:00am-5:00pm	17 <b>Church-Wide Garage Sale</b> 8:00am-2:00pm
18 <b>Senior Sunday</b>	19 <b>Board of Stewards Meeting</b> 6:00pm	20	21	22	23	24
25	26	27	28	29	30	31

## RECURRING WEEKLY:

### Sunday

8:30am | Arise Worship\* (Sanctuary)  
 9:30am | Sunday School\*  
 10:30am | Traditional Worship \* (Sanctuary)  
 11:30am | Handbell Choir (Handbell Room)  
 4:00pm-6:00pm | Youth on Sundays (Gym)

### Monday

9:00am-2:30pm | Mother's Day Out  
 6:30pm | Arise Band Rehearsal\* (Sanctuary)

### Tuesday

8:00am | Prayer Group\*\* (Knowles Chapel)  
 11:45am | Tuesday Lunch Bunch (Family Center)

### Wednesday

9:00am-2:30pm | Mother's Day Out  
 3:15pm-5:30pm | Children's Choir & Youth  
 5:15pm-6:00pm | Wednesday Dinner (Family Center)  
 6:00pm | Chancel Choir Rehearsal\* (Sanctuary)  
 Wednesday Bible Study (see list)

E-Mail: [office@stlukeskilgore.org](mailto:office@stlukeskilgore.org)

Office: 903-984-3576

Web Site: [www.stlukeskilgore.org](http://www.stlukeskilgore.org)

*The*  
**VISITOR**

"The Visitor" Published Monthly by:  
St. Luke's Methodist Church  
401 E. Main St., Kilgore, TX 75662-5905

Non-Profit Organization  
U.S. POSTAGE PAID  
Kilgore, Texas  
Permit No. 202

ADDRESS SERVICE REQUESTED

**LOVE GOD**

**LIVE HIS WORD**

**SHARE HIS GRACE**

**CLOTHING | GADGETS | FURNITURE | JEWELRY**

**Donation Collection | May 12-15**

**Garage Sale | May 16 & 17**

All proceeds go to Backpack Ministry  
& The Church Camp Fund