

ISSUE 9 | SEPTEMBER 2025

# THE VISITOR

A monthly publication of St. Luke's Methodist Church  
Kilgore, Texas



## Take Heart

THE FAITHFULNESS OF GOD

Join us for our next sermon series, "Take Heart."

This seven week series will encourage you to take heart in the gospel. We may face many difficult situations as we strive to follow Jesus, but he will remain faithful to us no matter what we encounter. Like Paul, we can be confident that God will reward those who long for Jesus's appearing.

## THIS ISSUE:

**Children's Ministry**

Page 2 & 3

**Youth Ministry**

Page 4 & 5

**A Message  
from Pastor Kelly**

Page 5

**Get Connected**

Page 6, 7, 8 & 9

**Stay Connected**

Page 10

**September Calendar**

Page 11



# WEDNESDAYS

@ St. Luke's

We are excited for a new year of Wednesday Activities!

## Children's Choir

**3:30pm-5:30pm**

Calling all kids, 4 years-5th grade! Come join us for fun games, a snack and music. In the choir, the children will have lots of fun while they learn biblical lessons, singing skills, Orff instruments, social skills, and leadership skills. They will learn to be an active part in their spiritual, physical, and mental growth. They sing for several services during the school year as well as present two musical programs and concerts at St. Luke's and in the Kilgore community.

Contact James Vermillion for more information.

Use the QR code to register your child for Children's Choir

## Wednesday Dinner

**5:15pm-6:00pm**

Let us take care of dinner for you! Join us for food and fellowship every Wednesday during the school year. Food is served in the Family Center 5:15pm-6:00pm. \$6 for adult 12 and older, \$3 for kids under 12. See page 7 for the September menu.

## Bible Study

**6:00pm-7:00pm**

Stick around after dinner for Bible Study. This year's theme is "Jesus is Calling" for our Kinder-5th graders and "In the Moo-o-d for Jesus" for our preschoolers. Drop-off and pick-up is in the Children's Courtyard. All students must be signed in by an adult at drop-off.

Adult Bible studies and groups are available during this time.

Nursery care is provided for children under 4 years old.

Contact Lindsey Exline for more information.

**MARK YOUR**  
*Calendar*  
Upcoming Children's  
Ministry Events

## SEPTEMBER

**3** Wednesday Activities  
Resume

**5** Parents Night Out  
6:00pm-9:00pm

**14** Third Grade Bible Sunday

**28** MYMU: Caldwell Zoo  
10:00am-4:00pm



**CHILDREN'S CHOIR**



**PARENTS NIGHT OUT**





# PIZZA & PLAY

## PARENT'S NIGHT OUT

### DATE & TIME:

09/05/25  
5:30PM-9:30PM

### LOCATION:

SLMC GYM

### RSVP:

09/04/25 BY 5PM

### COST:

\$15/KID



© Disney

# MYMU.

## Methodist Youth Moving Up

### CALDWELL ZOO

September 28

\$20 per student

Calling all 3rd, 4th, & 5th Graders!

We want you to join us for the first MYMU event of the year. We will be headed to the Caldwell Zoo in Tyler, on Sunday September 28. It is \$20 for your ticket.

Contact Lindsey Exline for more information.



## THIRD GRADE BIBLE SUNDAY

**September 14**

Receiving your third grade bible is big milestone in the lives of our church kids. Parents of current third graders, please contact Lindsey Exline to ensure that your student receives their Bible during the worship service.





## WEDNESDAYS AT ST. LUKE'S

**Resumes on September 3**

**3:30pm-5:15pm Hangout**

Come hangout with us afterschool on Wednesdays. Students 6th-12th grade, can be signed up to be picked up at Kilgore Middle & High School and driven to the church. We will have snacks and free time in the gym and our newly renovated Youth Lounge.

Use the QR code to register.

**5:15pm-6:00pm Dinner**

Dinner is served every Wednesday in the Family Center. \$6 for students 12 and over, \$3 for students under 12. See page 7 for the September menu.

**6:00pm-7:00pm Bible Study**

We will have a lesson with games, crafts, and music, each week.

## MOVIE NIGHT

**September 6 | 4:00pm-6:00pm**

We will have a snack dinner and watch a movie in the Youth Lounge.

## OBSTACLE COURSE

**September 14 | 4:00pm-6:00pm**

Come ready for a series of physical challenges to test your speed, endurance, and agility.

## WALK FOR LIVES

**September 20**

**Meet at Whataburger at 8:15am**

As a group we will attend the Walk for Live Fentanyl awareness event in downtown Kilgore. We will meet for breakfast at Whataburger and head downtown as a group.

## R.I.O.T. GAMES

**September 21 | 4:00pm-6:00pm**

Bring your friends for a night of Rediculous, Interesting, Outrageous, and Terrific games.

## CALDWELL ZOO

**September 28 | 10:00am-4:00pm**

Join us for a day at the zoo. We will meet in the gym at 10:00am and take the church bus to Tyler. \$20 per student.

## MARK YOUR Calendar

Upcoming Youth  
Ministry Events

## SEPTEMBER

3

**Wednesday Activities  
Resume**

6

**Movie Night**  
4:00pm-6:00pm

14

**Obstacle Course**  
4:00pm-6:00pm

20

**Walk For Lives**  
8:15am

21

**R.I.O.T. Games**  
4:00pm-6:00pm

26

**5th Quarter**  
9:30pm-12:00am

28

**Caldwell Zoo**  
10:00am-4:00pm



WEDNESDAYS



## GAMES • FOOD • PRIZES SILENT DISCO

Friday, September 26  
Following the home game  
against Pine Tree  
9:30pm-Midnight  
Kilgore Baptist Church

## FREE

For Kilgore Middle  
& High School Students.  
Must show school ID to enter

We are partnering with the youth of  
First Baptist Church to provide this

## FROM THE PASTOR'S HEART

Dear St. Luke's Family,

Every person has dreams—some we've carried since childhood, others that have grown in our hearts over time. As the new school year begins, I can't help but remember the sense of optimism I felt each fall—wondering what the year would bring, what new friendships would form, and what lessons would be learned. Dreams like these can shape our families, guide our vocations, inspire success in school, spark hope for the world, and stir our desire to leave a lasting legacy of love and faith.

The same is true for our church. As the people of St. Luke's Methodist Church in Kilgore, we dream together—about how God might use us to bless our community, reach the next generation, and help our light shine more brightly for Christ.

Right now, we are in a new and exciting phase of discovering God's plan for both our individual lives and our church. The psalmist reminds us, *"Commit your way to the Lord; trust in him, and he will act"* (Psalm 37:5). *When we place our dreams in God's hands, He shapes them according to His perfect purpose. This is a season of possibility and hope, and it calls us to rely fully on God's vision for our future.*

Discovering God's dreams requires us to seek Him together. Jesus told His disciples, *"Seek first the kingdom of God and his righteousness, and all these things will be added to you"* (Matthew 6:33). *God's dreams for us are never small—they stretch our faith, invite us to trust Him, and lead us to blessings far greater than we could design on our own.*

As your pastor, I encourage you to dream boldly—with your prayers, your service, and your faith. Ask God to awaken a fresh vision in your life and in our church. Pray that St. Luke's will be a place where God's plans are embraced and lived out with joy. Look for ways to fulfill God's calling on your life through the mission and ministry of St. Luke's. And remember—our dreams are not simply about what *we want*, but about what *God desires to do in and through us*.

Let's step into this season with open hearts, trusting that the God who calls us is faithful and will guide us into His best future.

In Christ's love and service,

*Rev. Kelly J. Inman*





To connect with others at church, actively participate, initiate conversations, and engage in church activities. Building genuine relationships is key, so take the initiative to learn names, sit with new people, and extend invitations to social events. Consider joining a small group or volunteering to further deepen your connections within the church community. Here are just some of the ways you can get connected at St. Luke's.

# HOLY

## Huddlers

We would like to invite and welcome everyone to eat and fellowship with the Holy Huddlers. We meet twice a month (not always the same week of the month due to holidays). Supper will be on you, but the fellowship will be shared by all.

**All gatherings begin at 6:00pm**

**September 5**

Chili's, Kilgore

**September 19**

The Olive Garden, Longview

If you have any questions, please call  
Barbara Francisco, 903-918-6797

# LUNCH BUNCH

## Bible Study

**Tuesdays @ 11:45am**  
**beginning September 2**

Join us for lunch, Bible Study, and fellowship, every Tuesday morning. Pastor Kelly will be leading our new study, "Profoundly Christian, Distinctly Methodist.."  
All are welcome.

# STROKE

## Scan

**Saturday, September 13**

**Family Center**

Do you have any of these risk factors?

High Blood Pressure, High Cholesterol, Family History of Stroke, Heart Attack, Aortic Aneurysms or Cancer, Diabetes, Atrial Fibrillation, Obesity

The first symptom of a stroke IS a stroke! Early detection helps save lives. St. Luke's is partnering with Stroke Scan to host a Vascular & Organ Wellness Ultrasound event on, Saturday, September 13.

Stroke Scan Screening includes the following:

- Stroke Risk Screening
- Abdominal Aortic Aneurysm Screening
- Thyroid Screening
- Liver Screening
- Kidney Screening
- Gallbladder Screening

All 7 ultrasounds are provided as a package for \$149

Contact Stroke Scan to make your appointment  
832-437-7355

## Wednesdays Beginning September 3

**3:15pm-5:30pm**

### Children's Choir/Youth

See pages 2 & 4 for more information about registration

**5:15pm-6:00pm**

### Wednesday Night Dinner

\$3 for kids | \$6 for adults

See the September menus below

**6:00pm-7:00pm**

### Studies & Groups

See list of adult studies & groups below\*

## STUDIES & GROUPS

### Wednesday Bible Study Group

Led by Pastor Kelly, this group will begin "Profoundly Christian, Distinctly Methodist."

### Pray Shawl Ministry

This group of ladies meets weekly for a time of prayer and fellowship as they create prayer shawls that are given to church and community members in times of struggle and in times of joy. You do not need to know how to crochet to be part of the group, they would love to guide you.

### Youth

Students in 6th-12th grade will gather for a Bible Study, including games and interactive learning.

### Children

Kids 4 years old-5th grade will gather in the Children's Courtyard for games, crafts, music, and a lesson.

\*Nursery Care is provided for children 3 and under.

## WEDNESDAY NIGHT MEALS

Join us for food and fellowship every Wednesday during the school year.

**5:15pm-6:00pm**  
**Family Center**

### September 3

Taco Salad, Nachos, Chips & Salsa,  
Dessert & Drink

### September 10

Ham, Cheesy Potatoes, Green Beans,  
Roll, Dessert, & Drink

### September 17

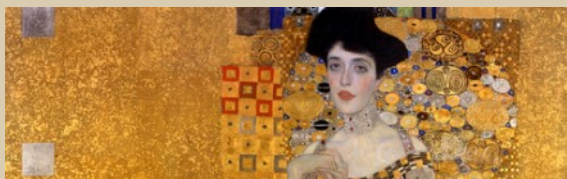
BBQ Meatballs W? Rice, Mac & Cheese, Salad, Dessert, & Drink

### September 24

Chicken Pitas, Salad,  
Dessert, & Drink

\$3 for kids under 12  
\$6 adults over 12

Cash, Check, and Credit Cards  
will be accepted at dinner.



St. Luke's Methodist Women  
invite you to a

# BIRTHDAY BASH

**Sunday, September 21  
11:30am**

St. Luke's Family Center  
401 E. Main St  
Kilgore, TX 75662

All ladies are invited to join us for a  
birthday lunch and celebration.

Childcare is available for children 5 years and younger.

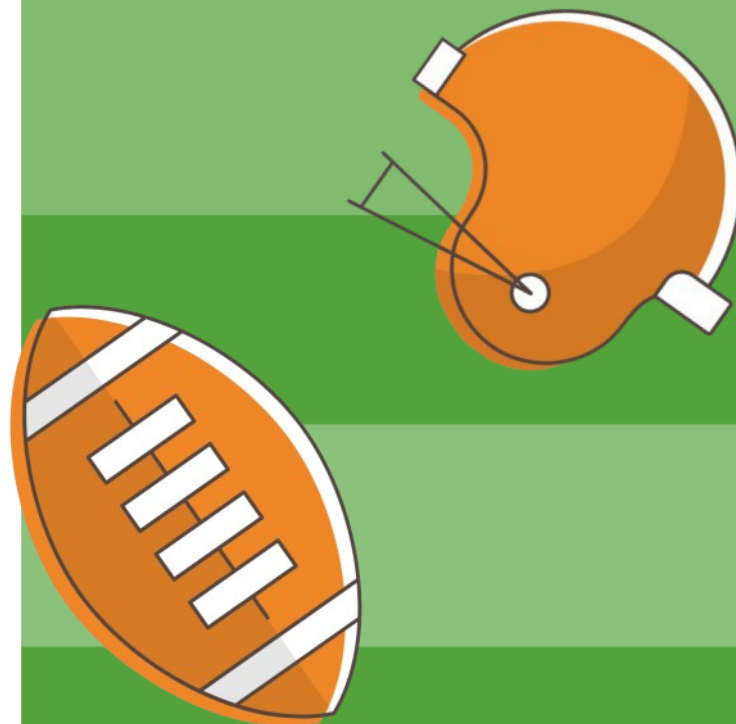
St. Luke's Methodist Men  
Invite you to a

# KICK OFF LUNCH

**Sunday, September 21  
11:30am**

St. Luke's Gym  
401 E. Main St  
Kilgore, TX 75662

Join us for lunch and fellowship as we kick-off a new  
year of men's ministry at St. Luke's.





## SUNDAE'S AT ST. LUKE'S

**September 28**  
**6:00pm-8:00pm**

We need your help to decorate the Pumpkin Patch! Meet us in the Patch at 6:00pm to start setting up all the things that make the patch so wonderful. Stick around afterwards for Sundae's in the Family Center.

We have all kinds of work, there will be something for everyone.



## PIZZA IN THE PATCH

**September 29**  
**6:00pm-8:00pm**

The patch is huge, so this will be a two night kind of job. Just like in college, come help us out and we will pay you in pizza. Even if you can't help out, join us for fellowship and food.



## STAFF CONTACT INFORMATION

We want to help you get connected and become part of the St. Luke's family. If you have any questions about a ministry opportunity or need assistance, we encourage you to contact a member of our staff.

### Church Office

office@stlukeskilgore.org  
(903) 984-3576

### Rev. Kelly Inman

Sr. Pastor  
pastor@stlukeskilgore.org  
(432) 296-9540

### Lindsey Exline

Dir. of Nursery Care  
children@stlukeskilgore.org  
(903) 985-1341

### Courtney Loper

Business Manager  
finance@stlukeskilgore.org

### Amanda Patton

Dir. of Mother's Day Out  
mdo@stlukeskilgore.org

### Jennifer Powell

Dir. of Communications  
office@stlukeskilgore.org  
(903) 984-3576

### Richelle Rathbun

Hospitality Coordinator  
(903) 371-3499

### James Vermillion

Music Dir.  
music@stlukeskilgore.org  
(903) 241-1447

# WAYS TO GIVE St. Luke's



## IN PERSON

Drop your gift in one of the boxes at worship or in the offering plate.



## ONLINE

At  
[stlukeskilgore.org](http://stlukeskilgore.org)



## BY MAIL

St. Luke's MC  
401 E. Main  
Kilgore, TX 75662



## QR CODE



STAY CONNECTED

## JOYS & CONCERNS

Please use the "Prayer" cards in the pews to keep us updated on your loved ones.

### PRAYERS FOR OUR MEMBERS

Roberta Boggs	Gregg Caraway	Jack & Sharry Christopher
Glenda Cochran	Brenda Ellis	Tommy Freeman
Jo Hancock	Pat Haynes	Carolyn Holcombe
Sam Holley	Bob Lindley	Mac Lee
Noah McClammy	Kay McKinley	Jim Williams
Karen S. Wilson		

### PRAYERS FOR OUR FAMILY & FRIENDS

Lori Akers.....	sister-in-law of Tammy & Patrick Akers
Melody Bagwell.....	wife of Mark Bagwell
Shari Baird.....	friend of the Gillen-Hall Family
Ricky Beets.....	friend of Jack & Susan Moore
Sherri Bennett & Family.....	friend of Karen L. Wilson
Richard & Holly Davis.....	Jim & Alana Williams
Daniel Doktor.....	friend of Jerry & Lindsey Exline
Andrew Ezell.....	friend of Debra Maloch
Cindy Garcia.....	sister of Ronda Dickey
Keith Henderson.....	friend of Beverly Gray
Kyle & Lucy Inman.....	son & daughter-in-law of Kelly & Keri Inman
Norma Isassi.....	sister of Bob Cantu
Diana Johnston.....	sister of James Hanshaw
Cindy Kulak.....	friend to many
Carolyn Landry.....	friend of Dean and Kathe Miller
Melissa LeBlanc.....	sister of Sally Thompson
Sandra Melville.....	sister-in-law of Jan Hattaway
Shawna Neeley.....	friend of Sally Holder
Margie Nelson.....	friend to many
James Pace.....	step-father of Angela Thompson
Dale & Lawana Sistrunk.....	friend of Chuck & Vernie Kunkel
Terri Smith.....	friend of Jan Hattaway
Kathy Spencer.....	cousin of Sheryl Caraway & Susan Moore
Kay-Lee Tarbutton & baby Hudsyn.....	
.....	daughter-in-law and grandson of Bob & Hope Cantu
Bonnie Venable.....	Sharon McCann
Amber Watson.....	friend of Glenda Cochran
Jeff Wenstrand.....	friend of Art & Pat Morchat

## SEPTEMBER BIRTHDAYS

Please say a prayer for our church family on their special day.

If we missed your date, please call the church office (903-984-3576).

### September 1

Shay Maloch

### September 16

Presley Thompson

### September 4

Carol Grimes

### September 17

Barbara Francisco  
Ryder Konczak

### September 5

Elena Cha

### September 18

Keith Hooks  
Matt Patton  
Isabell Witt

### September 8

Lindley Thurston

### September 9

Troy Jones  
Samantha Lovell  
Richelle Rathbun

### September 19

Lisa McClammy  
Billy Mims

### September 10

Rhett Rohde

### September 20

Barbara Boyd  
Susan Moore

### September 11

Emily Mason

### September 21

Anna Gillen-Hall

### September 12

William Bennett  
Joan Smith

### September 22

Cheyenne Jones

### September 13

Lily Chowdhury  
Sarah Gillen-Hall

### September 24

Lisa Frazier

### September 15

Billie Sue Mims  
Jordan Stephens  
Ann White

### September 25

Pat Thompson

### September 26

Laura Farnham

## SEPTEMBER ANNIVERSARIES

Art & Pat Morchat	9/4/1977
James & Celia Mooney	9/8/2001
Tony & SyRena Witt	9/16/1995
Cody & Veronica Sprayberry	9/17/2015
Rick & Marcy Huey	9/18/1999
Carl & Jolie Basham	9/18/2004

# September 2025

SUNDAY	MONDAY	TUESDAY	WEDNESDAY	THURSDAY	FRIDAY	SATURDAY
	<b>1</b> Labor Day Office Closed	<b>2</b> Lunch Bunch Bible Study Resumes 11:45am	<b>3</b> Wednesday Activities Begin	<b>4</b>	<b>5</b> Parents Night Out 5:30pm-9:30pm  Holy Huddlers 6:00pm	<b>6</b>
<b>7</b>	<b>8</b>	<b>9</b>	<b>10</b>	<b>11</b>	<b>12</b>	<b>13</b> Saturday Bread 8:30am
<b>14</b> Third Grade Bible Sunday	<b>15</b> Board of Stewards 6:00pm	<b>16</b>	<b>17</b>	<b>18</b>	<b>19</b> Holy Huddlers 6:00pm	<b>20</b> Walk for Lives 9:00am
<b>21</b> Birthday Bash 11:30am  Kick-Off Lunch 11:30am	<b>22</b>	<b>23</b>	<b>24</b>	<b>25</b>	<b>26</b> 5th Quarter 9:30pm-12:00am	<b>27</b>
<b>28</b> MYMU/Youth Caldwell Zoo 10:00am-4:00pm Sundaes at St. Lukes 6:00pm-8:00pm	<b>29</b> Pizza in the Patch 6:00pm-8:00pm	<b>30</b>				

## RECURRING WEEKLY:

### Sunday

8:30am | Arise Worship\* (Sanctuary)  
 9:30am | Sunday School\*  
 10:30am | Traditional Worship \* (Sanctuary)  
 11:30am | Handbell Choir (Handbell Room)  
 4:00pm-6:00pm | Youth on Sundays (Gym)

### Monday

9:00am-2:30pm | Mother's Day Out

### Tuesday

8:00am | Prayer Group\*\* (Knowles Chapel)  
 9:30am-10:30am | Exercise Group (Gym)  
 11:45am | Lunch Bunch Bible Study

### Wednesday

9:00am-2:30pm | Mother's Day Out  
 3:15pm-5:30pm | Children's Choir/Youth  
 5:15pm | Wednesday Night Dinner (Family Center)  
 6:00pm-7:00pm | Wednesday Bible Study & Groups  
 Chancel Choir Rehearsal\* (Sanctuary)

### Thursday

9:30am-10:30am | Exercise Group (Gym)  
 6:30pm | Arise Band Rehearsal (Sanctuary)



E-Mail: [office@stlukeskilgore.org](mailto:office@stlukeskilgore.org)

Office: 903-984-3576

Web Site: [www.stlukeskilgore.org](http://www.stlukeskilgore.org)

## The VISITOR

"The Visitor" Published Monthly by:  
St. Luke's Methodist Church  
401 E. Main St., Kilgore, TX 75662-5905

Non-Profit Organization  
U.S. POSTAGE PAID  
Kilgore, Texas  
Permit No. 202

ADDRESS SERVICE REQUESTED

LOVE GOD

LIVE HIS WORD

SHARE HIS GRACE

# SATURDAY BREAD

**September 13**

Help us prepare and deliver meals to elderly  
members of our community.

Contact Brenda Culpepper or the church office  
for more information.

